

APPROVAL PROCESS

flexo corrugated print

To ensure accuracy, The BoxMaker upholds the following approval procedures:

CAD SAMPLE APPROVAL

For any new project, we will produce a plain CAD sample for approval. The CAD sample will be a plain representation of your packaging or display (no print). This sample must be approved BEFORE supplying any graphic files. Once the sample has been approved, dieline files can be sent to you in EPS format upon request from your Sales Representative or Project Manager.

Please check for:

- ✓ Does your product fit inside the package/display?
Do not assume it fits. Please place the actual item, with all attachments, inside the sample.
- ✓ Does the sample support the weight of your item?
- ✓ Does the sample close and/or assemble properly?
- ✓ If you have multiple pieces, do they all fit together?



Helpful Tips:

- The board grade and color may vary
- Dimensions could vary +/- 1/16"



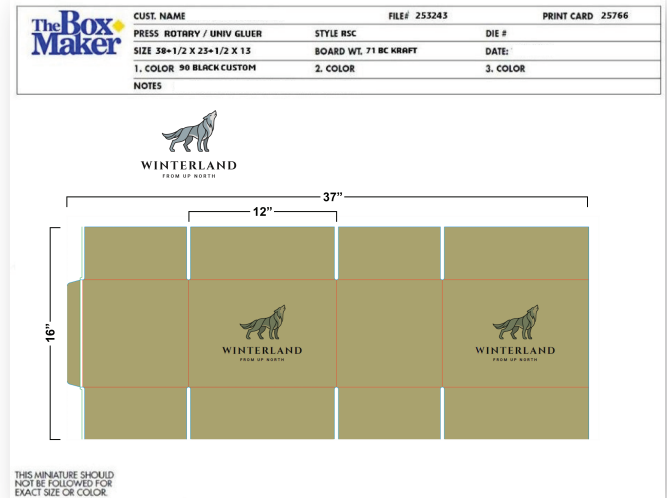
Finished Product

LAYOUT PROOF APPROVAL

After the CAD sample has been approved, you can send art files placed on the EPS dielines provided via our FTP site or directly to your Sales Representative and Project Manager. Upon review by our Art Department, we will create a PDF proof of the art layout on the dieline for approval. All layout proofs should be carefully reviewed. The PDF proof is the final review of art before we order plates and go to press. GCM colors are standard in corrugated flexographic printing. If you have selected a PMS color, an ink drawdown will be provided requiring signature.

Please check for:

- ✓ Are there any spelling errors, typos, or missing punctuation?
- ✓ Is the overall appearance correct?
- ✓ Is the proof missing any images, text, or graphic effects?
- ✓ Is the spacing of the art, in relation to the structure, correct?
- ✓ Is the art on the correct dieline?



Helpful Tips:

- ANY change will require an additional PDF layout proof for approval
- The signed proof will be used during production, and therefore must be returned
- Additional proofs are available by request, for an additional cost
- These proofs are NOT intended to represent actual production color

INK DRAWDOWNS FOR APPROVAL

If you have selected a PMS color, an ink drawdown will be provided requiring signature. This is a series of color swatches printed on corrugated liner that shows the scale from light-target-dark on flexo print. We need this variance to compensate for differences in liner shades and changes to the ink between runs. The ink swatch will represent 100% coverage of the specified spot color (no print screens/gradients).

Please check for:

- ✓ Is it the correct color?
- ✓ If matching a previously printed item, does the swatch complement the original item?
- ✓ Is the board liner correct?



Helpful Tip:

If you are printing on kraft corrugated, please note there is no standard in the color of kraft; actual color of production materials may vary. Ask your Sales Representative for details.