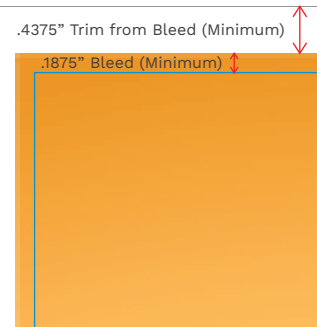


## C500 Printed Sheet Trim Guidelines

### FOR EDGES WITH FULL BLEED ARTWORK:

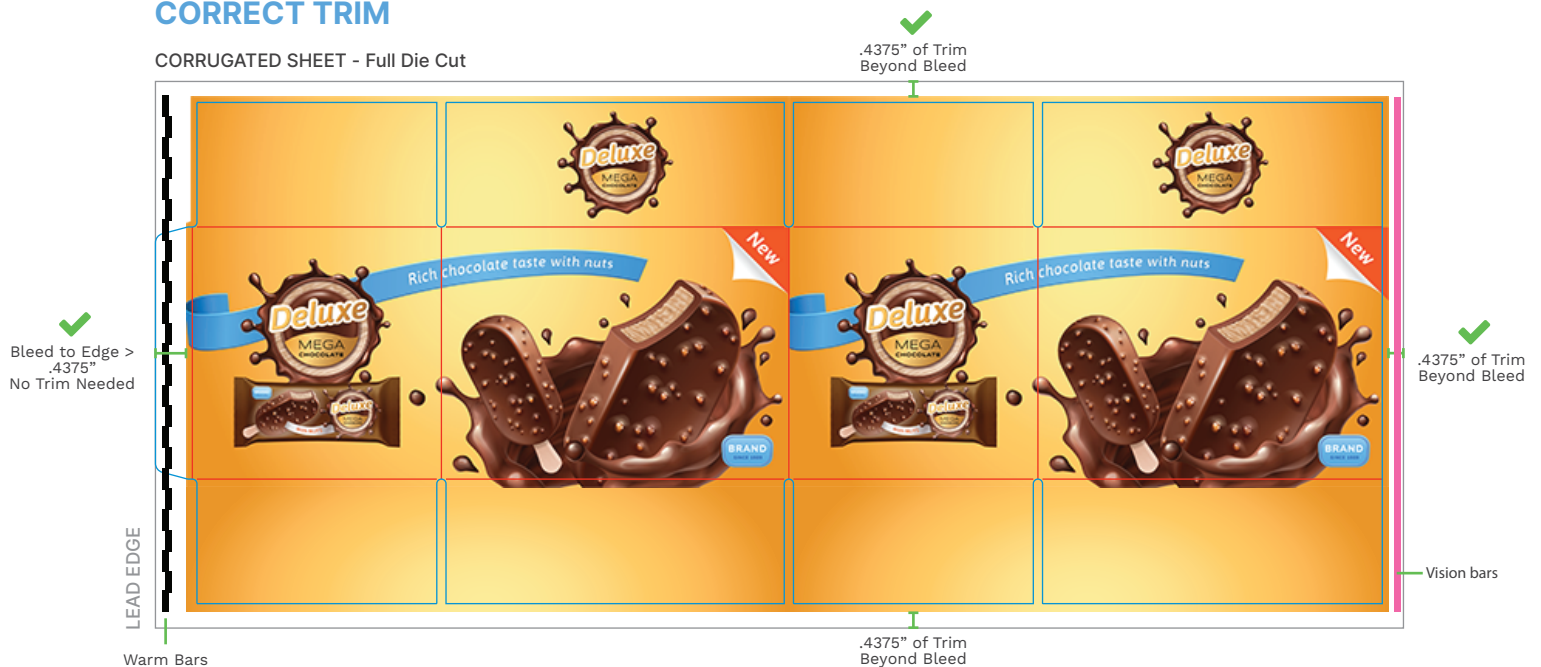
- ✓ A minimum\* of .4375" of blank trim from the edge of the sheet to the edge of the BLEED is required on all sides of sheet with bleed. The C500 will cut off any art within this area.
- ✓ Include a minimum\* bleed of .1875".

Edge of Sheet

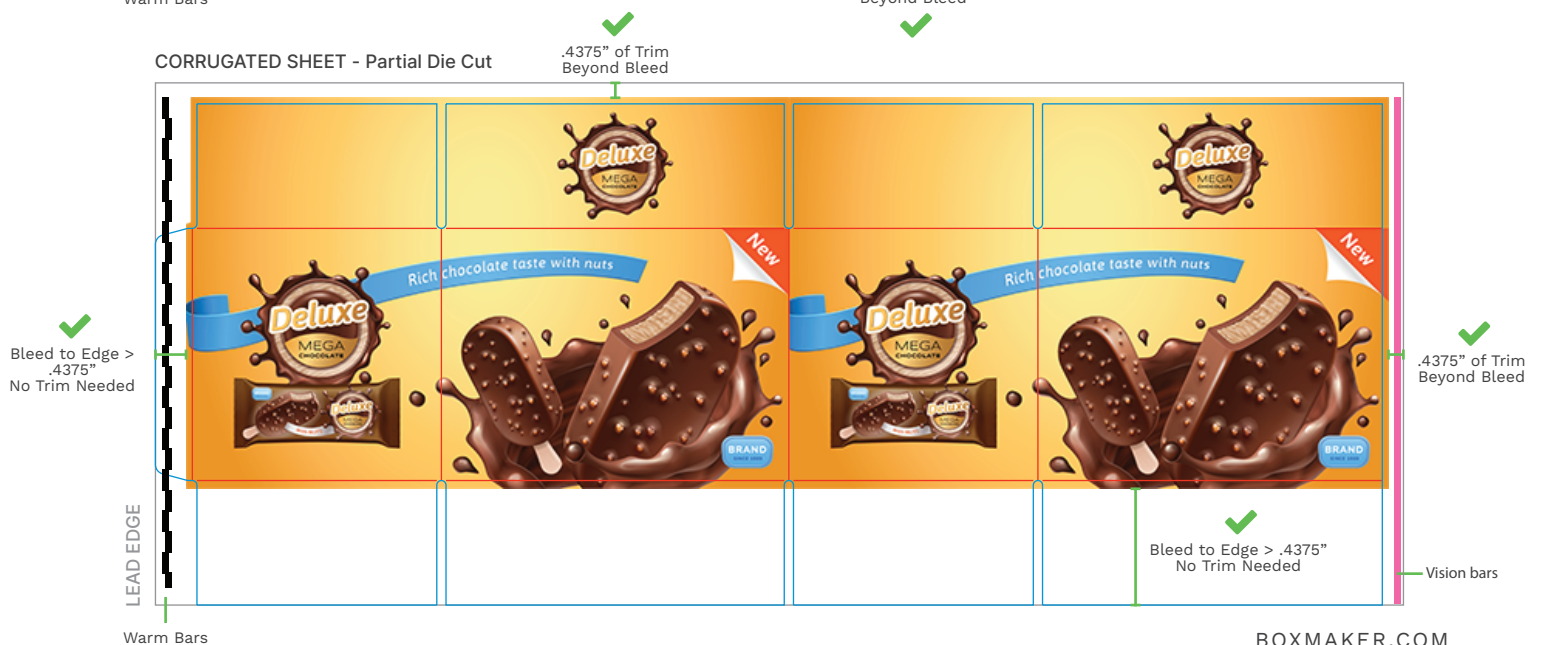


### CORRECT TRIM

#### CORRUGATED SHEET - Full Die Cut



#### CORRUGATED SHEET - Partial Die Cut



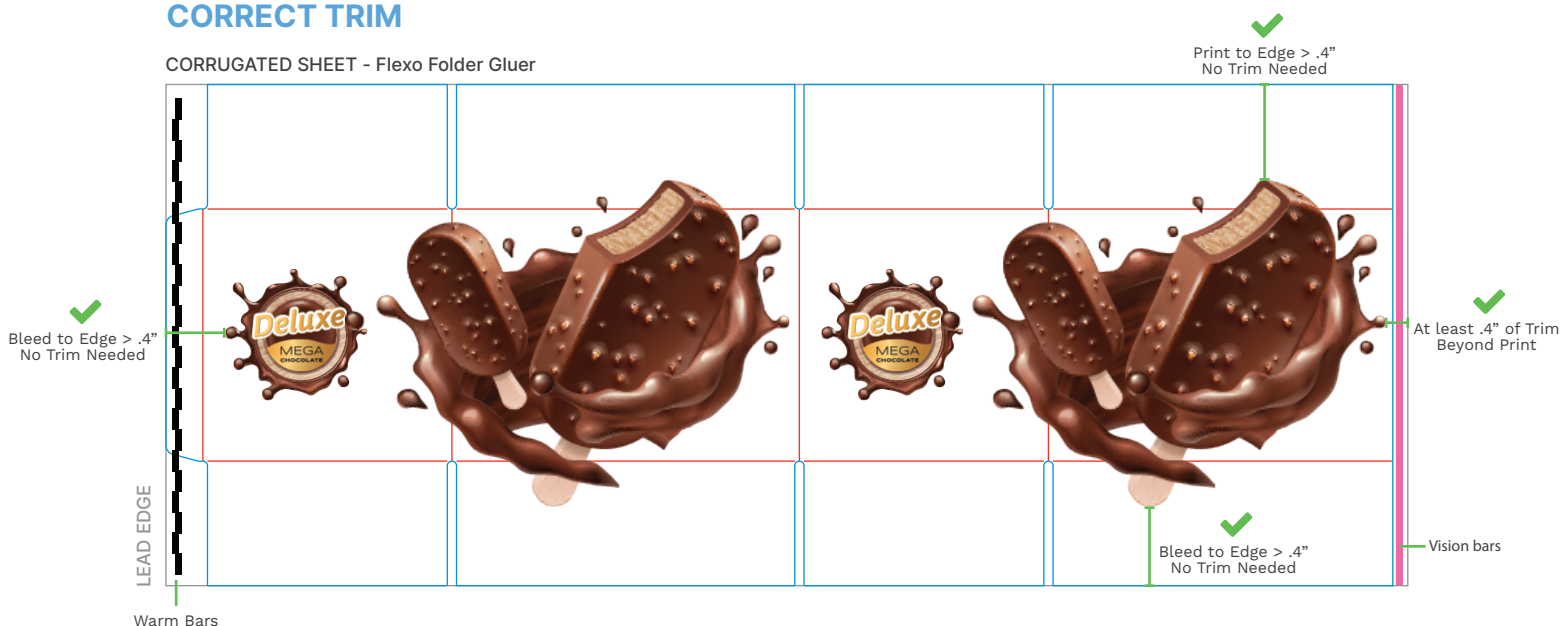
## FOR EDGES WITH ARTWORK THAT DOES NOT BLEED

- ✓ A minimum\* of .4375" of blank trim from the edge of the sheet to the edge of the ARTWORK required on all sides of sheet with no bleed. The C500 will cut off any art within this area.



## CORRECT TRIM

CORRUGATED SHEET - Flexo Folder Gluer



The lead edge of your sheet will include **warm bars** printed in the trim. Warm bars may print over non-printed structural components that extend into the trim, such as glue tabs.

The trailing edge of your sheet will include **vision bars** printed in the trim. Vision bars may print over non-printed structural components that extend into the trim, such as glue tabs.

\*Your particular trim and bleed needs may be greater than The BoxMaker's minimum requirements based on the specific tolerances of your finishing equipment. Please add to our minimum requirements for trim and bleed as needed based on how your printed sheets will be converted into finished goods.